

EIRM-100T/E Mini-Ethernet-Router



The CTRLink®Mini-Router offers a simple and easy interface between the Ethernet-based automation solution and the company network. With the help of IP masquarading and network adress translation the device can conceal the structure of the automation net behind only one IP address.

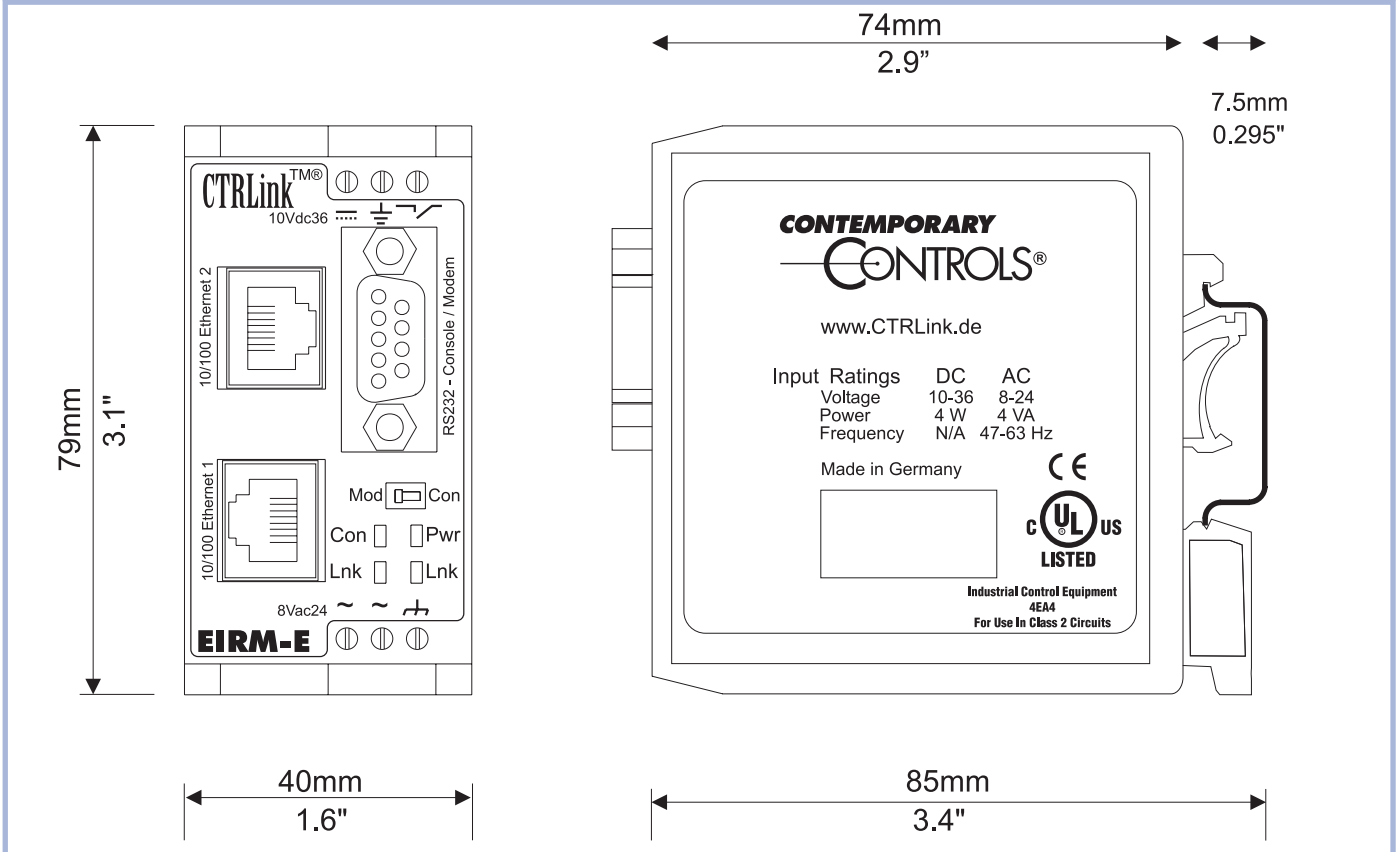
The RS232 console can be a connection to an external modem (ISDN, GSM or analogue) and can give safe access to the internet (for example for remote servicing). An integrated firewall provides increased security to the network.

The Router provides name resolution for the network. It is set-up by a Web-Browser or by Telnet. Palms and Laptops are possible to use. No additional configuration software is necessary. Functions like DynDNS and Call Back are available by default.

Technical Details:

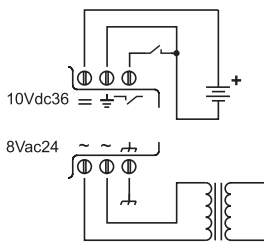
Enclosure:	solid case of plastic	Protocol:	TCP/IP, UDP, ICMP, PPP
Dimensions:	79 x 40 x 85 (mm)	Ethernet:	RJ-45, 10/100 BaseT, max. 100 m segment length
Input Voltage:	10-36 V DC 8-24 V AC	Port RS-232:	Extern ISDN, GSM or analogue Modem, serial console
Input Power:	4 Watt DC 4 VA AC	Compatibility:	EMC, CE, UL508
Configuration:	Embedded Webserver, SSH or Console	LED:	Modem/ Console Link, Power
Temperature:	0°C up to + 60°C operating temperature range	Functions:	Dial on Demand DSI via PPPoE NAT (Virtual Mapping)
Security:	Firewall IP Masquarading Port Forwarding Port-and Adressfilter		Call back DNS/ DynDNS system protocol VPN-IPsec function

Dimensions:

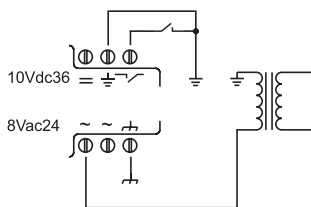


Power Options:

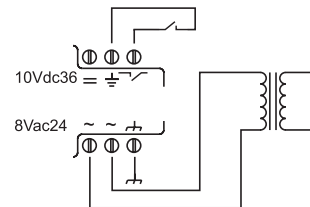
AC POWERED WITH BATTERY BACKUP



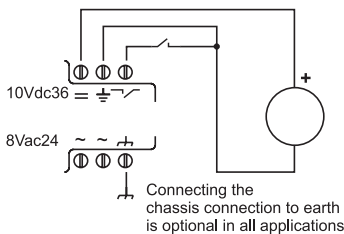
AC POWERED (grounded secondary)



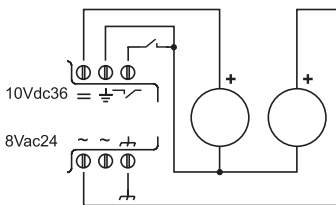
AC POWERED (ungrounded secondary)



DC POWERED



REDUNDANT DC POWERED



Type Name

EIRM-100T/E

Order Code

12578